



Al Sharq Bright International School

Model Paper for Final Exam 2017-2018

Name: _____ Subject: Biology Class: 8 Date: _____

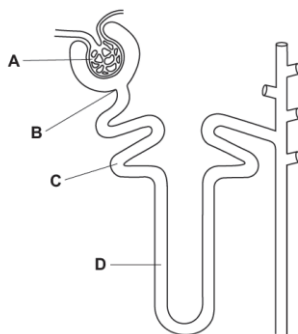
Paper – 2

A. Multiple choice questions.

- Which is a function of some white blood cells?
 - to carry glucose
 - to carry oxygen
 - to produce antibiotics
 - to produce antibodies
- Which statements about aerobic respiration are correct?

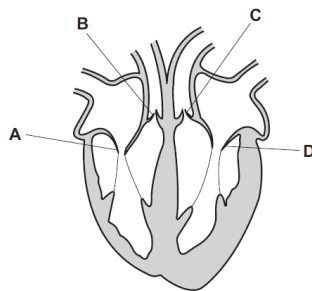
	breaks down nutrients	releases energy	uses oxygen
A	✓	✓	✓
B	✓	✓	X
C	X	X	✓
D	X	X	X

- The diagram shows the structure of a kidney tubule.
Where does filtration occur?



4. The diagram shows a section through the human heart.

Which is the right atrioventricular valve?



5. In which order does urea pass through structures in the body?

- a) kidney → ureter → liver → urethra
- b) kidney → urethra → liver → ureter
- c) liver → kidney → ureter → urethra
- d) liver → urethra → kidney → ureter

6. Which is the equation for anaerobic respiration in yeast?

- a) $C_6H_{12}O_6 \rightarrow 2C_2H_5OH + 2CO_2$
- b) $C_6H_{12}O_6 + 6O_2 \rightarrow 6CO_2 + 6H_2O$
- c) $2CO_2 + 2C_2H_5OH \rightarrow C_6H_{12}O_6$
- d) $6CO_2 + 6H_2O \rightarrow C_6H_{12}O_6 + 6O_2$

7. A deficiency in which of the following may result in a person's blood failing to clot properly?

- a) antibodies
- b) fibrinogen
- c) haemoglobin
- d) protease

Paper – 4

B. Answer the following questions.

1. (a) Fig. 1.1 shows the human head, neck and thorax.

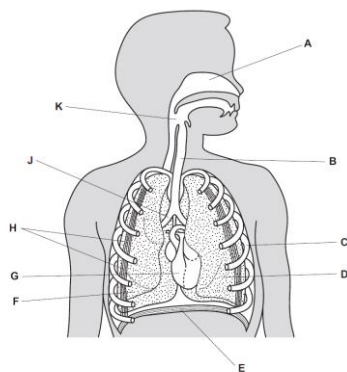


Fig. 1.1

Complete Table 1.1 by writing one letter from Fig. 1.1 to identify the named structures.

The first one has been done for you.

Table 1.1

structure	letter from Fig. 1.1
left lung	D
bronchus	
diaphragm	
intercostal muscle	
rib	
trachea	

2. Fig. 3.1 shows an external view of the heart.

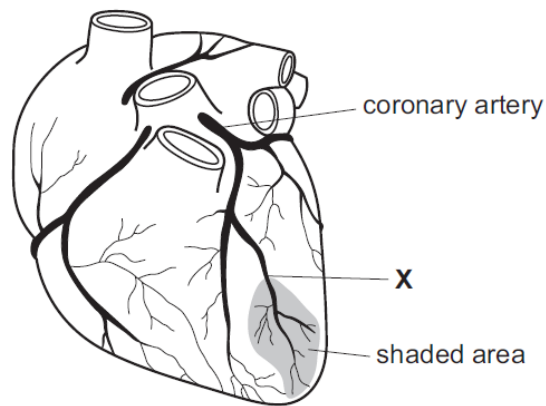


Fig. 3.1

(a) A blood clot is stuck at X. Explain what will happen to the heart muscle cells in the shaded area on Fig. 3.1.

(b) List three actions people can take to reduce the risk of having a blood clot in the coronary arteries.

- i)
- ii)
- iii)

3. What is kidney failure? What are the methods to overcome it?

Paper – 6

C. Alternative to practical:

1. Fig. 1.1 shows a vertical section through a human heart and the major blood vessels.

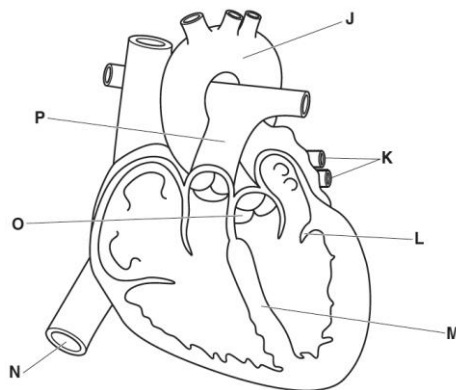


Fig. 1.1

- (a) (i) State the names of the structures labelled L, M and O as shown in Fig. 1.1.

L _____

M _____

O _____

- (ii) Identify a letter on Fig. 1.1 that represents a blood vessel that has:

blood with the highest concentration of carbon dioxide _____

blood with the highest concentration of oxygen _____

the highest pressure _____

Note: This is just a model, not the exam paper.